

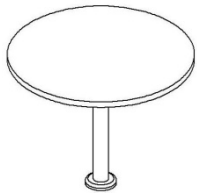


January 1, 2009 Price List

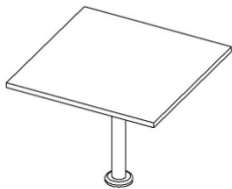
aFIX Collection

Shapes

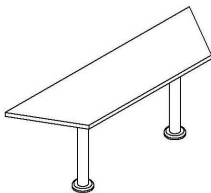
Questions? 816-774-4050



24" fixed AXP1 24RD S
30" fixed AXP1 30RD S



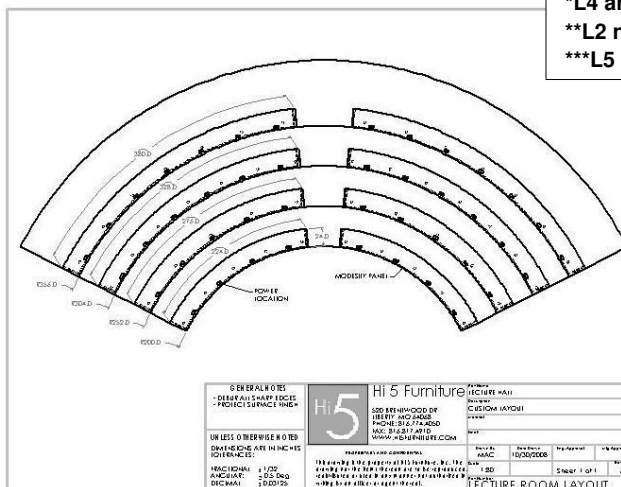
24" fixed AXP1 24SQ S
30" fixed AXP1 30SQ S



24 x 60 fixed AXP1 2460TZ S
24 x 72 fixed AXP1 2472TZ S
30 x 60 fixed AXP1 3060TZ S
30 x 72 fixed AXP1 3072TZ S

	Laminate	Laminate	Laminate	Veneer	Veneer	Solid Surfaces
		Bull nose L4 & L5 Self edges L6 Aluminum PVC L7 3mm Wood Veneer L19	Solid wood L20 L30 L21 L31 L22 L32 L33 L34 L35 L26 L36		Solid wood W20 W21 W22 W33 W34 W35 W26	Living Stone Material S1
Model Code:	# of Bases	Base Size		3mm Wood Veneer W19		
AXP1 24RD S	1	3"	500	n/a	925	1060
AXP1 30RD S	1	3"	530	n/a	1110	1490
AXP1 24SQ S	1	3"	435	720	810	1060
AXP1 30SQ S	1	3"	475	895	1035	1490
AXP1 2460TZ S	2	3"	850**	n/a	2090	n/a
AXP1 2472TZ S	2	3"	975**	n/a	2395	n/a
AXP1 3060TZ S	2	3"	930**	n/a	2310	n/a
AXP1 3072TZ S	2	3"	1075**	n/a	2610	n/a

Contact Hi5 for fixed Lecture Hall drawings and pricing.



*L4 and L19 not available on rounds
**L2 not available on trapezoids
***L5 not available on squares

Lead Times:

4-5 weeks laminate vinyl edged
5-6 weeks laminate wood edged
6-8 weeks veneer and customs

Example Base Product Code :					Finish Selections:			
LY	T1	2460	RE	S	L3	BK	7909-60	BK
Product Line	Base style	Top size	Top shape	Table function	Top edge	Base Finish	Top Laminate or Veneer Selection	Edge Color

Questions? 816-774-4050

Base Options:

Bar Height table (overall table height is 41.5")	BH	\$80 per base
Café Height tables (overall table height is 36")	CH	\$80 per base
Alternate table height shorter than 29"	SC	\$40 per base
Alternate table height taller than 29"	TC	\$80 per base
Polished Chrome Column only (floor cover remains black)	CR	\$70 per base

Top Options:

Custom Stain	UCS	\$400 per color
Special non-standard laminate (see inside cover)	UCL	

Power Options: (see pages 16–23 for all power options)

Grommets (black)	GB	\$20 per grommet
Grommets (silver)	GS	\$20 per grommet
Power Edge Mount with 2 power and 2 data (black)	PEB2D	\$325
Power Top Edge with 2 power and 2 data (black)	PTB2D	\$425
Daisy Link Power Box with 2 power and 2 data (black)	PB.1	\$460
Power Pak with 4 power and 2 data		See Page 23
Vertical wire management (black or silver)	VW B/S	\$25 per column
Vertical wire management holes	WH	\$30 per column
Horizontal Wire management	HW	\$80 per table

Modesty Panels:

Laminate Modesty Panels (Edges are silver or black PVC)

Laminate 48"	ML48B/S	\$230
Laminate 60"	ML60B/S	\$270
Laminate 72"	ML72B/S	\$285

Perforated Metal Modesty Panels (Black or Silver)

Metal 48"	MM48B/S	\$230
Metal 60"	MM60B/S	\$270
Metal 72"	MM72B/S	\$285

Accessories:

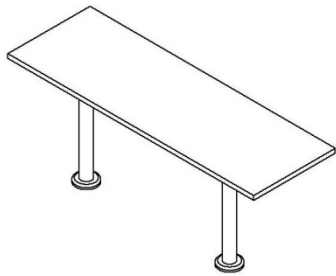
CPU Holder (fixed small)	C1	\$110
CPU Holder (fixed large)	C2	\$110
CPU Holder (adjustable swivel small)	C3	\$180
CPU Holder (adjustable swivel large)	C4	\$180
Keyboard Arm and Tray	K	\$485
Laptop Drawer	LD	\$480
Monitor Arm Short	MA1	\$310
Monitor Arm Medium	MA2	\$495
Monitor Arm Long	MA3	\$565
Dual Monitor Arm Long	MA4	\$1110

Freight Program: Delivered pricing on orders over \$1,500 net. Under \$1,500, add \$100 net freight charge.

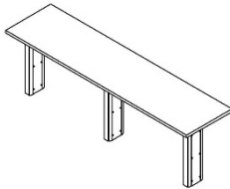
aFIX Collection

Rectangle Tables

Questions? 816-774-4050



			Laminate	Laminate	Laminate	Veneer	Veneer	Solid Surfaces	
					Solid wood		Solid wood		
				Bull nose L4	L20 L30		W20		
				Self edges L6	L21 L31		W21		
				Aluminum PVC L7	L22 L32		W22		
			PVC L3	3mm Wood Veneer L19	L33	3mm Wood Veneer W19	W33	Living Stone Material S1	
					L34		W34		
					L35		W35		
					L26 L36		W26		
Model Code:	# of Bases	Base Size							
18 x 48 fixed	AXP1 1848RE S	2	3"	795	885	1035	1170	1310	1735
18 x 60 fixed	AXP1 1860RE S	2	3"	840	935	1120	1290	1465	2025
18 x 72 fixed	AXP1 1872RE S	2	3"	875	985	1205	1410	1615	2310
18 x 84 fixed	AXP1 1884RE S	3	3"	950	1035	1290	1530	1770	2600
18 x 96 fixed	AXP1 1896RE S	3	3"	960	1085	1475	1655	1925	2890
24 x 48 fixed	AXP1 2448RE S	2	3"	810	945	1140	1325	1505	2120
24 x 60 fixed	AXP1 2460RE S	2	3"	845	1005	1250	1480	1705	2500
24 x 72 fixed	AXP1 2472RE S	2	3"	880	1070	1355	1640	1905	2890
24 x 84 fixed	AXP1 2484RE S	3	3"	955	1130	1465	1795	2105	3270
24 x 96 fixed	AXP1 2496RE S	3	3"	965	1195	1575	1955	2305	3655
30 x 48 fixed	AXP1 3048RE S	2	3"	840	1000	1240	1475	1700	2500
30 x 60 fixed	AXP1 3060RE S	2	3"	880	1075	1375	1670	1945	2985
30 x 72 fixed	AXP1 3072RE S	2	3"	920	1155	1510	1865	2195	3465
30 x 84 fixed	AXP1 3084RE S	3	3"	1010	1230	1640	2060	2440	3945
30 x 96 fixed	AXP1 3096RE S	3	3"	1020	1305	1775	2255	2790	4425
30 x 120 fixed	AXP1 36120RE S	3	3"	1695	1850	2170	2775	3270	n/a



All mounting hardware and power wires concealed inside base.

18 x 48 fixed	AXD1 1848RE S	2	8"	1015	1105	1255	1390	1530	1955
18 x 60 fixed	AXD1 1860RE S	2	8"	1060	1155	1340	1510	1685	2245
18 x 72 fixed	AXD1 1872RE S	2	8"	1095	1205	1425	1630	1835	2530
18 x 84 fixed	AXD1 1884RE S	3	8"	1170	1255	1510	1750	1990	2820
18 x 96 fixed	AXD1 1896RE S	3	8"	1180	1305	1695	1875	2145	3110
24 x 48 fixed	AXD1 2448RE S	2	8"	1030	1165	1360	1545	1725	2340
24 x 60 fixed	AXD1 2460RE S	2	8"	1065	1225	1470	1700	1925	2720
24 x 72 fixed	AXD1 2472RE S	2	8"	1100	1290	1575	1860	2125	3110
24 x 84 fixed	AXD1 2484RE S	3	8"	1175	1350	1685	2015	2325	3490
24 x 96 fixed	AXD1 2496RE S	3	8"	1185	1415	1795	2175	2525	3875
30 x 48 fixed	AXD1 3048RE S	2	8"	1060	1220	1460	1695	1920	2720
30 x 60 fixed	AXD1 3060RE S	2	8"	1100	1295	1595	1890	2165	3205
30 x 72 fixed	AXD1 3072RE S	2	8"	1140	1375	1730	2085	2415	3685
30 x 84 fixed	AXD1 3084RE S	3	8"	1230	1450	1860	2280	2660	4165
30 x 96 fixed	AXD1 3096RE S	3	8"	1240	1525	1995	2475	3010	4645
30 x 120 fixed	AXD1 36120RE S	3	8"	2025	2180	2500	3105	3600	n/a

Lead Times:

4-5 weeks laminate vinyl edged
5-6 weeks laminate wood edged
6-8 weeks veneer and customs

Example Base Product Code :						Finish Selections:			
LY	T1	2460	RE	S	L3	-	BK	7909-60	BK
Product Line	Base style	Top size	Top shape	Table function	Top edge	Options in Alphabetical Order	Base Finish	Top Laminate or Veneer Selection	Edge Color

Questions? 816-774-4050

Base Options:

Polished Chrome column only (floor cover remains black) (not available in AXD1 8" model)	CR	\$70 per base
---	----	---------------

Top Options:

Custom Stain	UCS	\$400 per color
Special non-standard laminate (see inside cover)	UCL	

Power Options: (see pages 16–23 for all power options)

Grommets (black)	GB	\$20 per grommet
Grommets (silver)	GS	\$20 per grommet
Power Edge Mount with 2 power and 2 data (black)	PEB2D	\$325
Power Top Edge with 2 power and 2 data (black)	PTB2D	\$345
Daisy Link Power Box with 2 power and 2 data (black)	PB.1	\$460
Power Pak with 4 power and 2 data		See Page 23
Vertical Wire management (black or silver)	VW B/S	\$25 per leg
Vertical Wire management hole (round legs only)	WH	\$30 per leg
Horizontal Wire management	HW	\$80 per table

Modesty Panels:

Laminate Modesty Panels (Edges are silver or black PVC)		
Laminate 48"	ML48B/S	\$230
Laminate 60"	ML60B/S	\$270
Laminate 72"	ML72B/S	\$285
Perforated Metal Modesty Panels (Black or Silver)		
Metal 48"	MM48B/S	\$230
Metal 60"	MM60B/S	\$270
Metal 72"	MM72B/S	\$285

Accessories:

CPU Holder (fixed small)	C1	\$110
CPU Holder (fixed large)	C2	\$110
CPU Holder (adjustable swivel small)	C3	\$180
CPU Holder (adjustable swivel large)	C4	\$180
Keyboard Arm and Tray	K	\$485
Laptop Drawer	LD	\$480
Monitor Arm Short	MA1	\$310
Monitor Arm Medium	MA2	\$495
Monitor Arm Long	MA3	\$565
Dual Monitor Arm Long	MA4	\$1110

Freight Program: Delivered pricing on orders over \$1,500 net. Under \$1,500, add \$100 net freight charge.